

# Natural changes of population 1961 – 2022

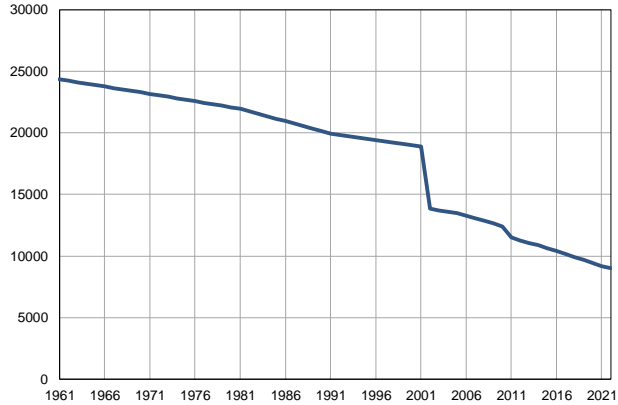
Profile  
July 2023

## Malo Crniće

	1961	2022
Population size	24347	9034
Livebirths, Number	280	43
Deaths, Number	301	217
Natural increase, Number	-21	-174
Infants deaths, Number	14	0
Livebirths, per 1,000 population	12	5
Deaths, per 1,000 population	12	24
Natural increase, per 1,000 population	-1	-19
Infants deaths, per 1,000 livebirths	50	0

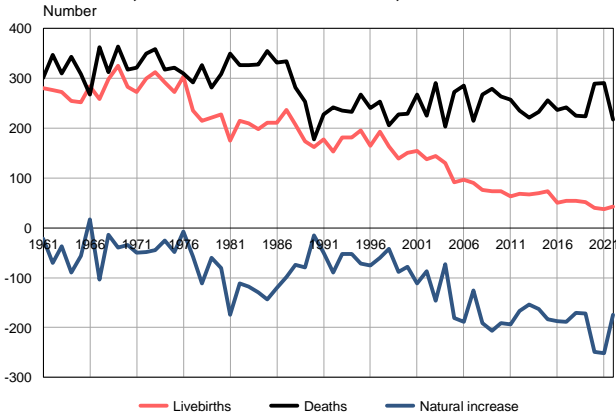
Source: Vital Statistics, SORS

Population size, 1961–2022



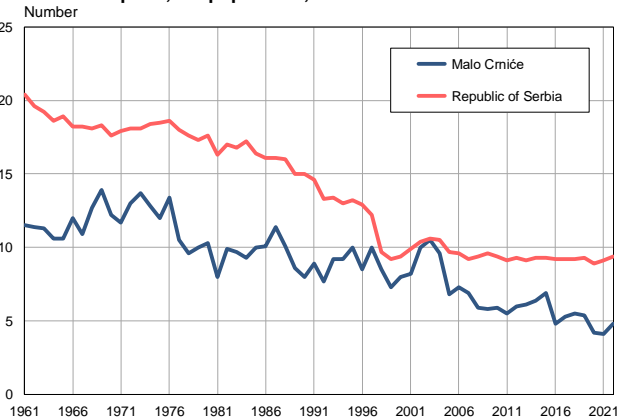
Source: Vital Statistics, SORS

Livebirths, deaths and natural increase, 1961–2022



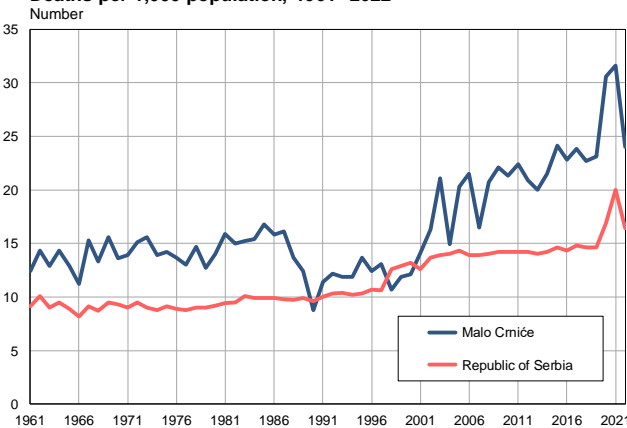
Source: Vital Statistics, SORS

Livebirths per 1,000 population, 1961–2022



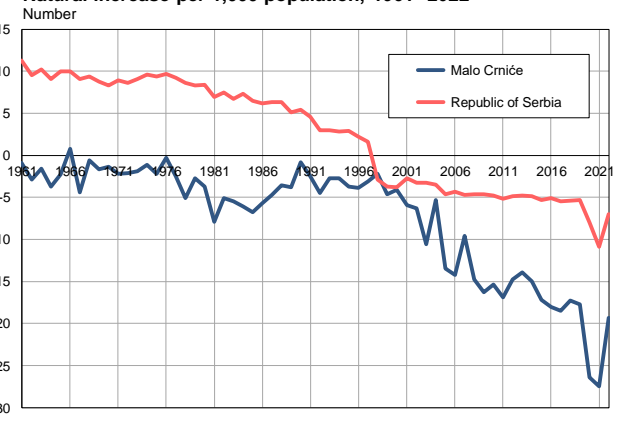
Source: Vital Statistics, SORS

Deaths per 1,000 population, 1961–2022



Source: Vital Statistics, SORS

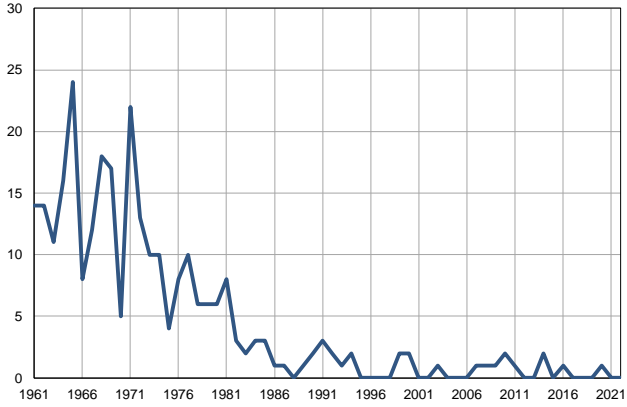
Natural increase per 1,000 population, 1961–2022



Source: Vital Statistics, SORS

**Infants deaths, 1961–2022**

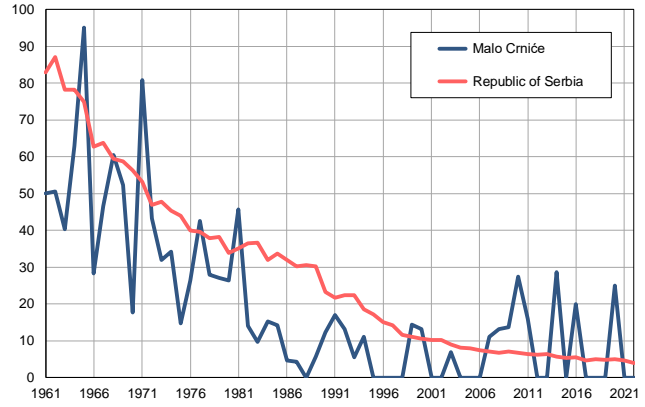
Number



Source: Vital Statistics, SORS

**Infants deaths per 1,000 livebirths, 1961–2022**

Number



Source: Vital Statistics, SORS

**Table. Natural changes of population, Malo Crniće**

Year	Number of population	Livebirths	Deaths	Natural increase	Infants deaths	per 1000 population			Infant deaths per 1000 livebirths
						Livebirths	Deaths	Natural increase	
1961	24347	280	301	-21	14	11.5	12.4	-0.9	50.0
1962	24229	277	347	-70	14	11.4	14.3	-2.9	50.5
1963	24111	273	310	-37	11	11.3	12.9	-1.6	40.3
1964	23994	254	343	-89	16	10.6	14.3	-3.7	63.0
1965	23876	252	308	-56	24	10.6	12.9	-2.3	95.2
1966	23758	284	267	17	8	12.0	11.2	0.8	28.2
1967	23640	258	362	-104	12	10.9	15.3	-4.4	46.5
1968	23522	298	312	-14	18	12.7	13.3	-0.6	60.4
1969	23405	325	364	-39	17	13.9	15.6	-1.7	52.3
1970	23287	283	317	-34	5	12.2	13.6	-1.4	17.7
1971	23169	272	322	-50	22	11.7	13.9	-2.2	80.9
1972	23047	300	349	-49	13	13.0	15.1	-2.1	43.3
1973	22925	313	358	-45	10	13.7	15.6	-1.9	31.9
1974	22804	292	317	-25	10	12.8	13.9	-1.1	34.2
1975	22683	272	321	-49	4	12.0	14.2	-2.2	14.7
1976	22561	303	310	-7	8	13.4	13.7	-0.3	26.4
1977	22439	235	292	-57	10	10.5	13.0	-2.5	42.6
1978	22318	215	327	-112	6	9.6	14.7	-5.1	27.9
1979	22196	221	281	-60	6	10.0	12.7	-2.7	27.1
1980	22075	227	308	-81	6	10.3	14.0	-3.7	26.4
1981	21953	175	349	-174	8	8.0	15.9	-7.9	45.7
1982	21752	215	326	-111	3	9.9	15.0	-5.1	14.0
1983	21551	209	327	-118	2	9.7	15.2	-5.5	9.6
1984	21349	198	328	-130	3	9.3	15.4	-6.1	15.2
1985	21148	211	355	-144	3	10.0	16.8	-6.8	14.2
1986	20947	211	331	-120	1	10.1	15.8	-5.7	4.7
1987	20745	236	334	-98	1	11.4	16.1	-4.7	4.2
1988	20544	207	281	-74	0	10.1	13.7	-3.6	0.0
1989	20343	174	253	-79	1	8.6	12.4	-3.8	5.7
1990	20141	162	177	-15	2	8.0	8.8	-0.8	12.3
1991	19940	177	227	-50	3	8.9	11.4	-2.5	16.9
1992	19835	153	242	-89	2	7.7	12.2	-4.5	13.1
1993	19730	182	235	-53	1	9.2	11.9	-2.7	5.5
1994	19624	181	233	-52	2	9.2	11.9	-2.7	11.0
1995	19519	196	268	-72	0	10.0	13.7	-3.7	0.0
1996	19414	165	241	-76	0	8.5	12.4	-3.9	0.0
1997	19309	193	253	-60	0	10.0	13.1	-3.1	0.0
1998	19204	164	206	-42	0	8.5	10.7	-2.2	0.0
1999	19099	139	227	-88	2	7.3	11.9	-4.6	14.4
2000	18993	151	229	-78	2	8.0	12.1	-4.1	13.2
2001	18888	155	267	-112	0	8.2	14.1	-5.9	0.0
2002	13837	138	225	-87	0	10.0	16.3	-6.3	0.0
2003	13716	144	290	-146	1	10.5	21.1	-10.6	6.9
2004	13606	130	203	-73	0	9.6	14.9	-5.3	0.0
2005	13467	92	273	-181	0	6.8	20.3	-13.5	0.0

**Table. Natural changes of population, Malo Crniće**

Year	Number of population	Livebirths	Deaths	Natural increase	Infants deaths	per 1000 population			Infant deaths per 1000 livebirths
						Livebirths	Deaths	Natural increase	
2006	13257	97	285	-188	0	7.3	21.5	-14.2	0.0
2007	13064	90	215	-125	1	6.9	16.5	-9.6	11.1
2008	12869	76	267	-191	1	5.9	20.7	-14.8	13.2
2009	12629	73	279	-206	1	5.8	22.1	-16.3	13.7
2010	12392	73	264	-191	2	5.9	21.3	-15.4	27.4
2011	11494	63	257	-194	1	5.5	22.4	-16.9	15.9
2012	11269	68	235	-167	0	6.0	20.9	-14.8	0.0
2013	11054	67	221	-154	0	6.1	20.0	-13.9	0.0
2014	10860	70	233	-163	2	6.4	21.5	-15.0	28.6
2015	10640	73	256	-183	0	6.9	24.1	-17.2	0.0
2016	10402	50	237	-187	1	4.8	22.8	-18.0	20.0
2017	10150	54	242	-188	0	5.3	23.8	-18.5	0.0
2018	9903	54	225	-171	0	5.5	22.7	-17.3	0.0
2019	9682	52	224	-172	0	5.4	23.1	-17.7	0.0
2020	9439	40	289	-249	1	4.2	30.6	-26.4	25.0
2021	9168	38	290	-252	0	4.1	31.6	-27.5	0.0
2022	9034	43	217	-174	0	4.8	24.0	-19.3	0.0

Source: Vital Statistics, SORS

## Definitions

### Population size

Number of population in the respective year. The data on the number of population in 1961, 1971, 1981 and 1991 are census data, while for the inter-census years the number of population was calculated as an average inter-census difference. From 2002 are given the population estimates that were calculated according to the census of population results and the annual statistics of natural mechanical population movements.

### Livebirths

Absolute number of live births in the course of a year. Live born child means a child giving vital signs after birth (breathing, i.e. heartbeat), even for the shortest time, regardless the mother's pregnancy duration.

### Deaths

Absolute number of deaths in the course of a year. Deceased is a person that whenever after having been born live, shows permanently stopped vital signs.

### Natural increase

Natural population increase is the number of live births minus the number of deaths.

### Infants deaths

Absolute number of infants deaths in the course of a year. Deceased infant is a child that after having been born live and before aged one year, shows permanently stopped vital signs.

### Livebirths, per 1 000 population

Livebirths rate is the ratio of the number of live births and the population size in the respective year. The number of live births is divided by the population size and then multiplied by 1000.

### Deaths, per 1 000 population

General mortality rate represents the ratio between the number of deaths and the population size in the respective year. The number of deaths is divided by population size and then multiplied by 1000.

### Natural increase, per 1 000 population

Natural population increase rate is the difference between the number of live births and the number of deaths, in relation to the population size in the respective year.

Natural population increase rate = (number of live births - number of deaths) / population size \* 1000

### Infants deaths, per 1 000 livebirths

Infant mortality rate is the ratio of deceased children under 1 year of age and live births in the respective year. The mortality rate is expressed per 1000 live births.

Infant mortality rate = (number of deceased children under 1 year of age / number of live births) \* 1000

## Additional info:



Download all database data in Excel format:

[Data](#)



DevInfo profiles:

[devinfo.stat.gov.rs/SerbiaProfileLauncher/?lang=en](http://devinfo.stat.gov.rs/SerbiaProfileLauncher/?lang=en)



DevInfo online database:

[devinfo.stat.gov.rs/vitalna](http://devinfo.stat.gov.rs/vitalna)



For additional information or questions please contact:

[devinfo@stat.gov.rs](mailto:devinfo@stat.gov.rs)